

614-737-8850 • 1-877-898-8850

## Work Top Freezer

### Top:

Constructed of heavy gauge 300 series stainless steel #3 finish.

### Exterior:

Heavy gauge stainless steel fronts and sides. The rear, bottom and compressor housing are constructed of heavy gauge galvanized steel.

### Interior:

Entire liner is constructed of heavy gauge stainless steel with adjustable powder coated wire rack(s).

### Refrigeration:

Heavy-duty refrigeration with expansion valve for maximum performance and quick recovery using (CFC free) R-404a refrigerant. Evaporator coil is provided with electric defrost and built-in fan delay, allowing coil to be chilled before returning to normal cycle. Fan motor(s) are thermally protected and permanently lubricated. Unit furnished with an electronic controller for maximum performance including a time initiated temperature terminated defrost program. The hot gas condensate evaporator saves energy.

### Doors:

Fronts and liners are constructed of heavy gauge stainless steel and foamed-in-place with high density polyurethane insulation and welded corners. Doors are provided with magnetic gaskets for positive seals and they are fitted with heavy-duty die cast hinges.

### Tailored to Your Needs:

Just one of the benefits of our complete in-house design, fabricating and manufacturing capabilities, is the fact that any of our Refrigerated Work Tops can be tailored to fit your exact functional needs and interior décor preferences. Just let us know what you want, and our professional design staff will make it a reality.

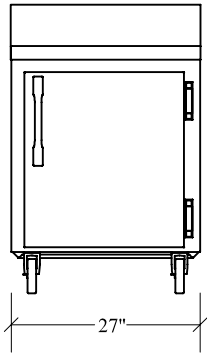


AWTF-Series

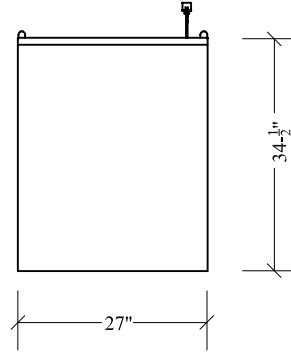
### Standard features:

- Stainless steel interior and exterior. Galvanized rear and bottom
- Hot gas condensate evaporator uses no electricity
- Heavy-duty casters
- Electronic temperature controller for maximum accuracy with LED display
- Coated evaporator coil for protection against corrosion.
- Heavy-duty refrigeration system with expansion valve environmentally friendly R-404a

## AWTF1B27

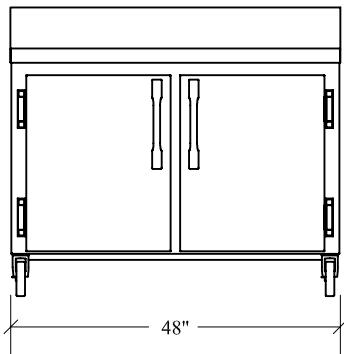


ELEVATION

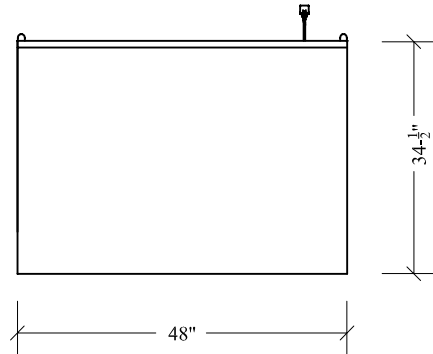


PLAN VIEW

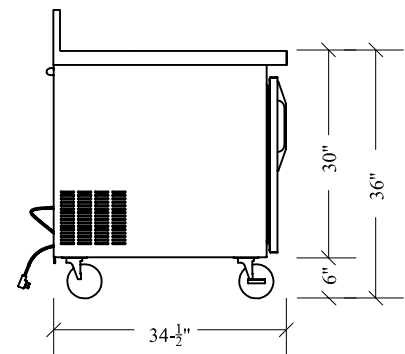
## AWTF1B48



ELEVATION



PLAN VIEW



SIDE VIEW

PART #	LENGTH	DEPTH	HEIGHT	NUMBER OF DOORS	COMPRESSOR	AMPS	VOLTAGE	SHIP WEIGHT
AWTF1B27	27 <sup>5</sup> / <sub>8</sub> "	34 <sup>1</sup> / <sub>2</sub> "	36"	1	<sup>1</sup> / <sub>4</sub>	8.1	115/60/1	364
AWTF1B48	48"	34 <sup>1</sup> / <sub>2</sub> "	36"	2	<sup>1</sup> / <sub>2</sub>	11	115/60/1	464